

Research is happening here

Research is important because it helps to improve your healthcare by finding out which treatments work best, and by discovering new ways of treating illness.



“Heart attack deaths halve in a decade

The lives of almost 80,000 heart attack victims have been saved in just under a decade as deaths have halved due to healthier lives and better treatment, research has found.”

The Telegraph, 26 January 2012



Research is happening across England



Over **500,000** people
took part in research in
England last year



Research impact

Researchers proved that a new vaccine provided better protection for children against pneumococcal disease.

To find out if there is a suitable study for you, speak to your health advisor or contact your Local Research Network using the details on our website. The Clinical Research Network - supporting research to make patients, and the NHS, better.

Research is happening here

Clinical research taking place in this practice includes:

Diabetes

Cancer

Cardiac & Stroke

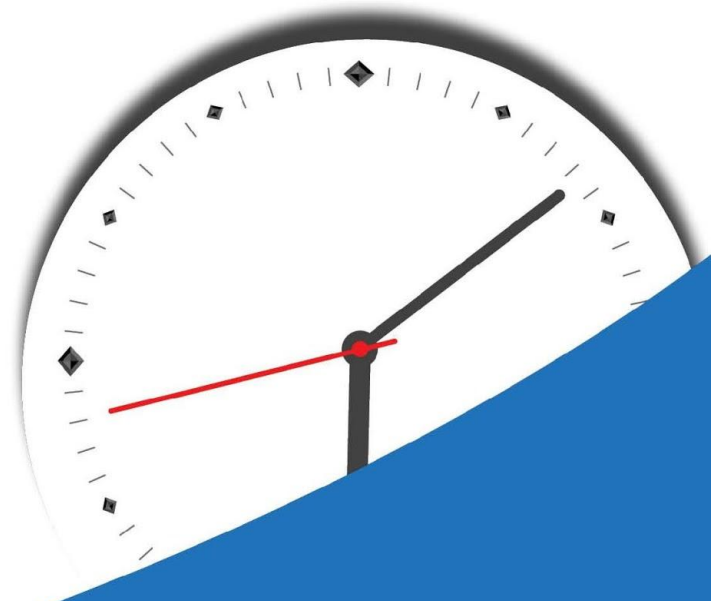
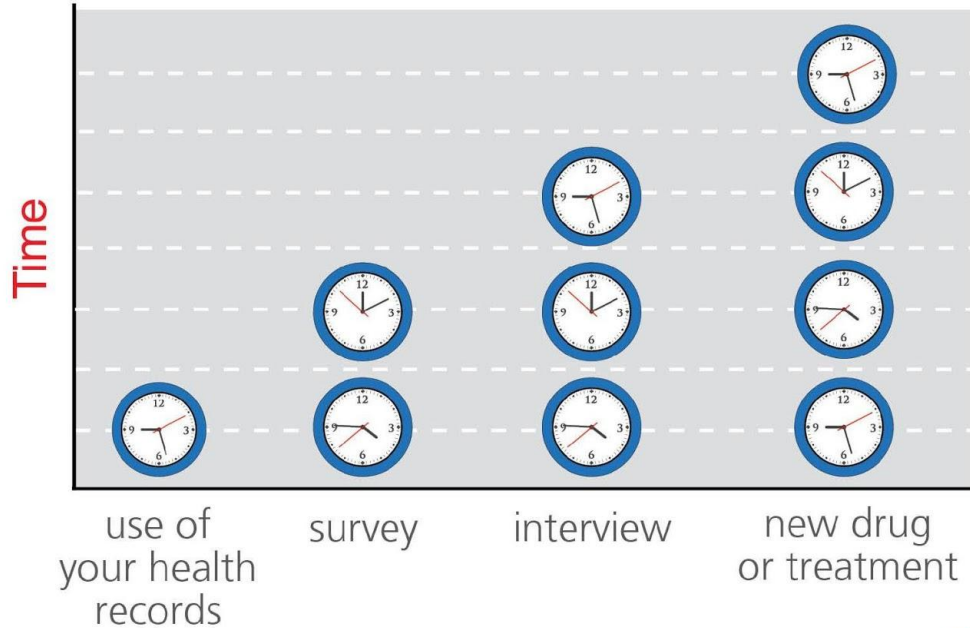
If you are interested in finding out more, please speak to your health advisor.





How much of your time will a research study take up?

Different research studies need your help in different ways, so some take more time than others. For example:





Mrs. Lynda Barrow

GP practice patient

“I jumped at the chance to take part in the Alzheimer study. I have seen so much Alzheimer’s and I wanted the opportunity to help. I thought, “Why not?” It might help people in the future and it may also do me some good.”





Stephen Fry

“If you took time to participate in this study, you’ve no idea how much good you will be doing...Thank you so very much on behalf of the untold millions you are helping.”

(On taking part in a study on Bipolar Disease)

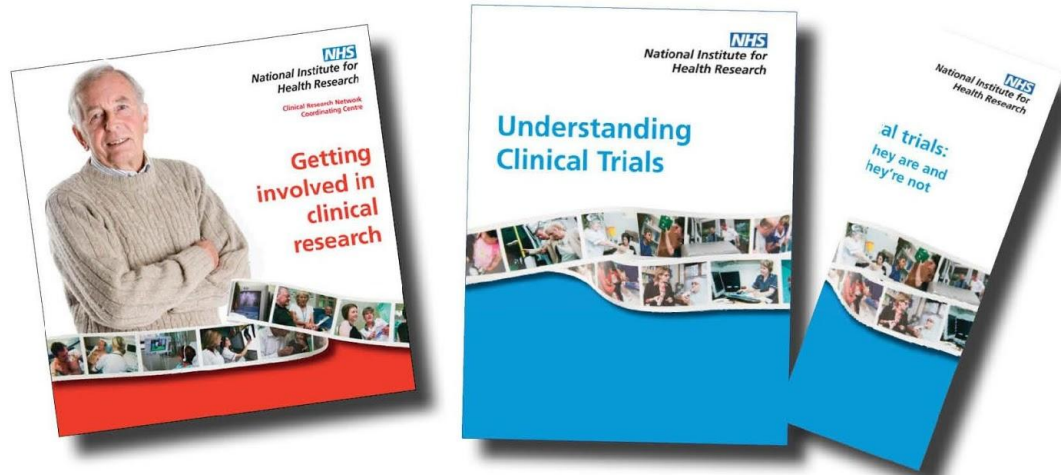


Find out more



National Institute for
Health Research

Clinical Research Network



These materials aim to answer any questions you may have about clinical research studies.

You can **order** the **DVD** and **leaflets**, **for free**, at:

www.crncc.nihr.ac.uk/resources

or by contacting your Local Research Network using the details opposite.



Clinical Research Network (CRN): Eastern
<http://www.crn.nihr.ac.uk/primarycare>